

We need you.

The YLH is a predatory insect that commonly feeds on other social bees and wasps, including western honeybees. Establishment of this exotic pest in the US poses a significant threat to our already embattled beekeeping industry, including colony losses resulting from YLH attacks.

Together, we can protect South Carolina from invasive honeybee pests. Learn about YLH, share information with others, and report sightings to help slow its spread.



Ben Powell, Clemson University Extension

If you think you have seen a YLH or a YLH nest in any stage, please take a photo and submit it to our online reporting tool. Access additional resources or submit reports at: www.clemson.edu/ylh.

SCAN TO REPORT



clemson.edu/ylh

Who we are. What we do.

The Department of Plant Industry, part of Regulatory Services in Clemson University's College of Agriculture, Forestry, and Life Sciences, works to prevent the introduction of new plant pests into South Carolina and limits the spread of existing plant pests within the state.

Plant pest surveys, inspections, quarantines, and control and eradication programs are among the tools used to safeguard the state's agricultural and natural resources.

We support horticultural businesses (nurseries, greenhouse growers, transplant growers and turf grass producers), as well as farmers, agricultural industries and South Carolina consumers in shipping plant material intrastate, interstate and internationally.

Inspections and certification services help ensure that plants are pest-free, which is essential for movement of plant material to other states and foreign countries.

Department of Plant Industry

511 Westinghouse Rd.
Pendleton SC 29670

Phone: 864-646-2140

dpi.clemson.edu
clemson.edu/invasives

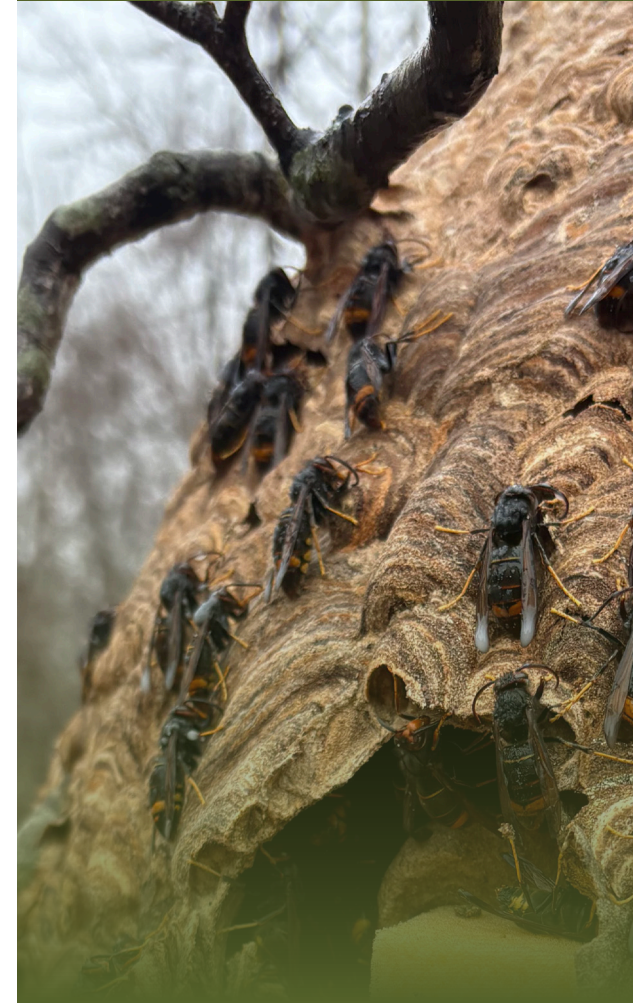


PLANT INDUSTRY
Regulatory Services

Clemson® University

Yellow-legged Hornet

(Vespa velutina nigrithorax)



**REGULATORY
SERVICES**

www.clemson.edu/invasives

Embryo nests.



Primary nests.



Secondary nests.



Yellow-legged Hornet (YLH) embryo nests are typically visible from March through June. These nests are papery and range from the size of a ping pong ball to a tennis ball.

Embryo nests can usually be spotted low to the ground on houses or other structures.

YLH primary nests are typically visible from May through August. This nest stage ranges from the size of a softball to a basketball.

Primary nests are usually found between six and 25 feet in the air on houses, structures or in short trees and shrubs.

YLH secondary nests are typically visible from June through December, with sizes ranging from that of a basketball to larger than a car tire.

YLH secondary nests are often found 80-90 feet above ground in tall trees.

It is important to note that Yellow-legged hornets undergo a low activity period from December through February. Please report suspected nest sightings, even in the absence of hornet activity.

NEST STAGES.

Look out for the invasive Yellow-legged Hornet year round.